



# Recipe Database

## Lobster/Shrimp Butter

Yield: 1 Pint  
Portions: 32

### Ingredients

### Quantity

### Directions

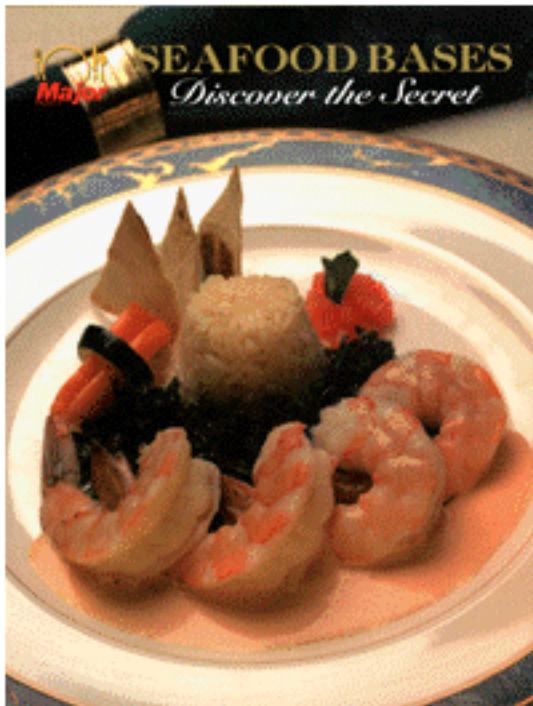
Butter

1 lb.

MAJOR LOBSTER BASE  
OR  
MAJOR SHRIMP BASE

2 tsp.

In a heavy sauce pot clarify butter by melting, and removing curd on top, leaving only the golden fat. Stir in either Major Lobster Base or Major Shrimp Base.



For More Delicious Recipes Using Major Products Bases, Gravies, and Flavor Enhancers, Log On To Our Web Site at [www.majorproducts.com](http://www.majorproducts.com)  
Or Call us at 800-222-1296

***Enjoy!***